

SSS – Sonifex Software Switchboard

The Sonifex Software Switchboard is designed to control upto 24 DHY-04/DHY-04G/HD hybrids, and uses a local or networked SQL database for shared access to the hybrids and phone book for upto five users (Administrator and 4 others).

The interface is designed for use with a touchscreen, but can be used with traditional mouse and keyboard inputs. Where data entry is required when using a touch-screen, the Windows™ on-screen keyboard can be used.

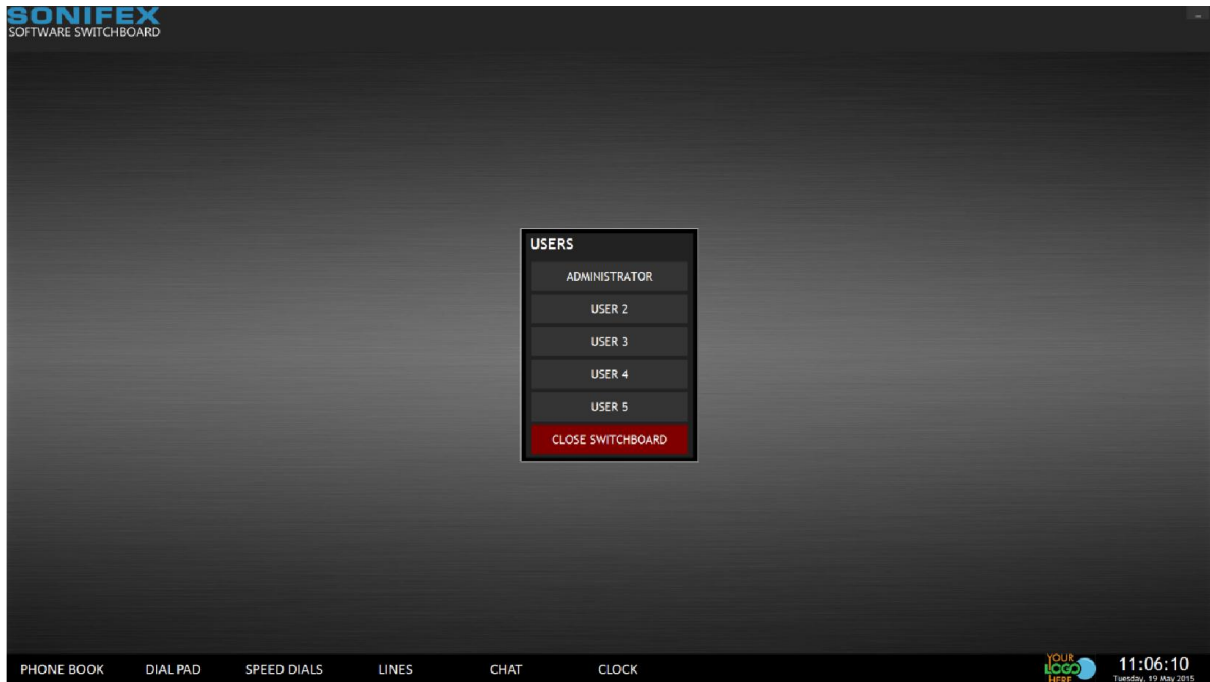
Prerequisites:

- Microsoft Windows 7/8
- Full HD display (1920 x 1080)
- Microsoft SQL Server 2008 or later for networked database

SSS has the following features:

- Phone Book, {caller's name, location, number and note}
- Chat Screen – text-based messages between users.
- Hybrid Speed-Dials
- Broadcast Clock
- Dial Pad

Initial Screen

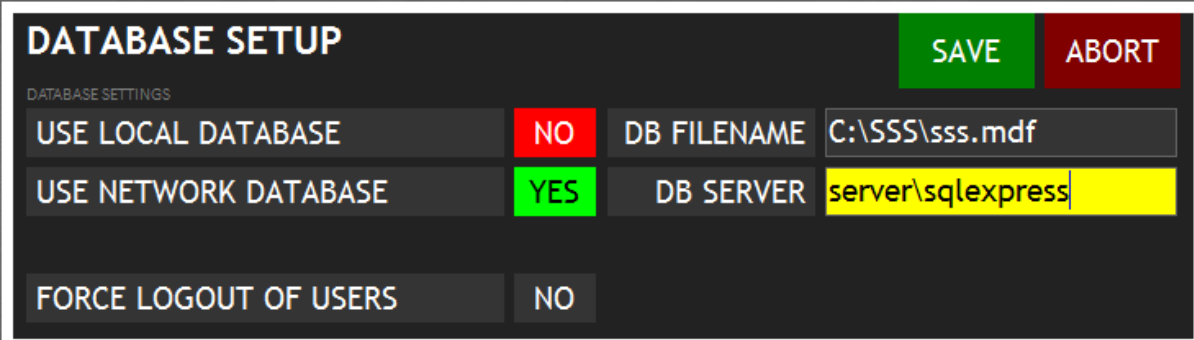


The initial screen displays:

- The Sonifex Software Switchboard logo
- The Users menu
- The Screens menu at the bottom of the screen
- Your logo
- A clock

Database Setup

To open the Database Setup screen, right-click the Sonifex Software Switchboard logo in the top-left of the main screen. This can only be done before selecting a user name from the User menu.



The screenshot shows a 'DATABASE SETUP' window with a dark background. At the top right are 'SAVE' (green) and 'ABORT' (red) buttons. Below the title is 'DATABASE SETTINGS'. The settings are as follows:

Setting	Value
USE LOCAL DATABASE	NO
DB FILENAME	C:\SSS\sss.mdf
USE NETWORK DATABASE	YES
DB SERVER	server\sqlexpress
FORCE LOGOUT OF USERS	NO

Local Database

Select 'Use Local Database' and enter a valid 'DB Filename' if you are planning a single computer setup. This is the default setting on installation of SSS.

Network Database

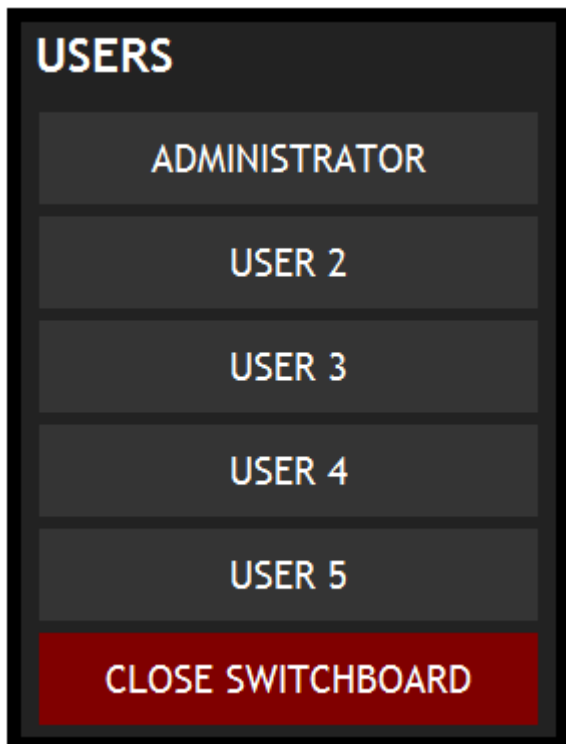
Select 'Use Network Database' and enter a valid 'DB Server' instance name if you are planning a shared system with two or more computers.

Force Logout

Use 'Force Logout of Users' if a user name becomes unavailable from the Users menu. This can occur if a compute has shutdown unexpectedly without closing SSS.

Users

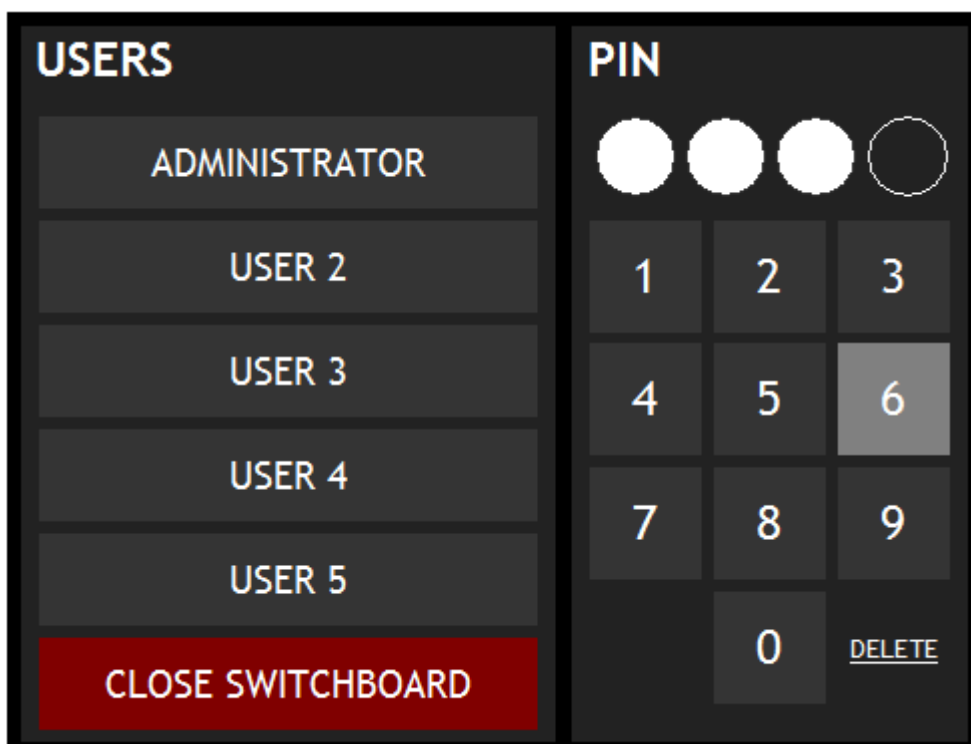
The Users menu displays the currently defined users of the software.



- Users can only be logged-in on one computer at any one time.
- Each user requires a 4-digit PIN
- The four users in addition to 'Administrator' can be renamed.
- Select 'Close Switchboard' to exit the software and return to Windows™

Select a User

To login, select the required user and enter the user's 4-digit PIN to continue.



Screen Menu



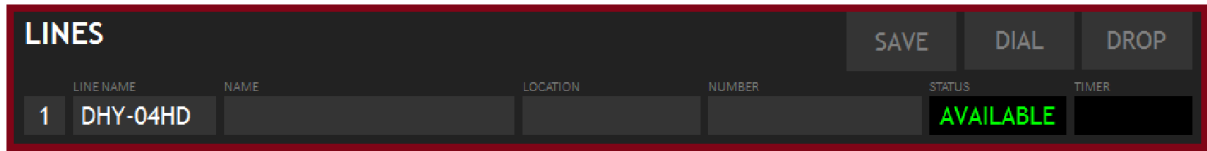
The Screen menu at the bottom of the screen is used to show/hide the various windows.

Clock and Logo



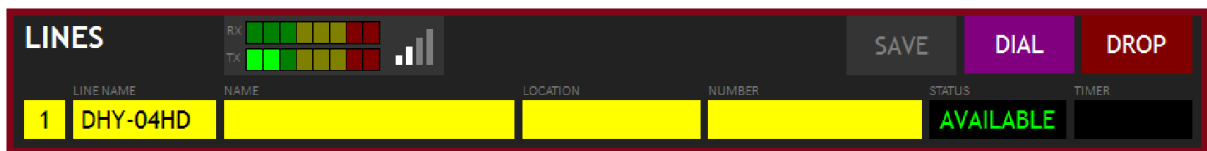
Located in the bottom-right corner of the screen are the system clock, and a place-holder for your logo. Your logo should be a JPEG of 48px in height, be called yourlogo.jpg, and be placed in the same folder as the installed software executable. The logo file is refreshed every minute, so can be changed periodically, for example at the beginning of a show.

Lines



Upto 24 lines can be displayed in the Lines screen. Each shows:

- Line Number (1 to 24)
- Line Name (as defined in the System Settings)
- Caller Name (if dialled from the Phone Book, or incoming caller number is recognised)
- Caller Location (if dialled from the Phone Book, or incoming caller number is recognised)
- Caller Number
- Line Status (AVAILABLE, DIALLING, RINGING, INCOMING, OUTGOING, OFFLINE)
- Line Timer (duration of current call)



Metering

Basic RX and TX metering is shown for the currently selected line.

Signal Strength Indicator

The signal strength indicator is only applicable on the DHY-04G/HD versions.

Phonebook

PHONE BOOK				
	NAME	LOCATION	NUMBER	NOTE
1	Caller 1	Location 1	11 111 1111	Called 1st
2	Caller 2	Location 2	22 222 2222	Called 2nd
3	Caller 3	Location 3	33 333 3333	Called 3rd
4	Caller 4	Location 4	44 444 4444	Called 4th
5	Caller 5	Location 5	55 555 5555	Called 5th
6	Caller 6	Location 6	66 666 6666	Called 6th
7	Caller 7	Location 7	77 777 7777	Called 7th
8	Caller 8	Location 8	88 888 8888	Called 8th
9				
10				
11				
12				
13				
14				
15				

< NEW EDIT DELETE RECENT > DIAL DROP

SEARCH	CALLER	NUMBER													
1	2	3	4	5	6	7	8	9	0	BACK	1	2	3	SD1	SD2
Q	W	E	R	T	Y	U	I	O	P	CLR	4	5	6	SD3	SD4
A	S	D	F	G	H	J	K	L	ENTER	7	8	9	SD5	SD6	
Z	X	C	V	B	N	M	*				*	0	#	SD7	RE

Use the on-screen keyboard to search the phonebook database for matching caller names. The wildcard character * can be used to search partial matching entries.

Use the Previous < and Next > buttons when there are more than 15 matching results.

Calling a Phonebook Entry

To call an entry in the phonebook, select that entry so that it is highlighted, select a line to dial out of, and then click the 'Dial' button.

Dropping a Call

If the selected line is connected, dialling or ringing, then clicking the 'Drop' button will disconnect the line.

New Phonebook Entry

To create a new phonebook entry, click 'New'.

NEW ENTRY

SAVE **ABORT**

NAME

LOCATION

NUMBER

NOTE

After entering the details, click 'Save' to save the details, or 'Abort' to return to the phonebook listing.

Edit Phonebook Entry

Highlight the phonebook entry you wish to edit, click 'Edit'.

PHONE BOOK				
	NAME	LOCATION	NUMBER	NOTE
1	CALLER X	Local Town	123 1234 1234	Called regarding news item
2				

EDIT ENTRY		SAVE	ABORT
NAME	<input type="text" value="CALLER X"/>		
LOCATION	<input type="text" value="Local Town"/>		
NUMBER	<input type="text" value="123 1234 1234"/>		
NOTE	<input type="text" value="Called regarding news item"/>		

Click the 'Save' button to save the edited entry to the database.

Click the 'Abort' button to abort any changes made to the entry and return to the phonebook listing.

Delete Phonebook Entry

To delete a phonebook entry from the database, highlight the item, then click 'Delete'.

PHONE BOOK				
	NAME	LOCATION	NUMBER	NOTE
1	CALLER X	Local Town	123 1234 1234	Called regarding news item
2				

Select 'Yes' to confirm deletion, or 'No' to cancel.

Delete selected entry?

Are you sure?

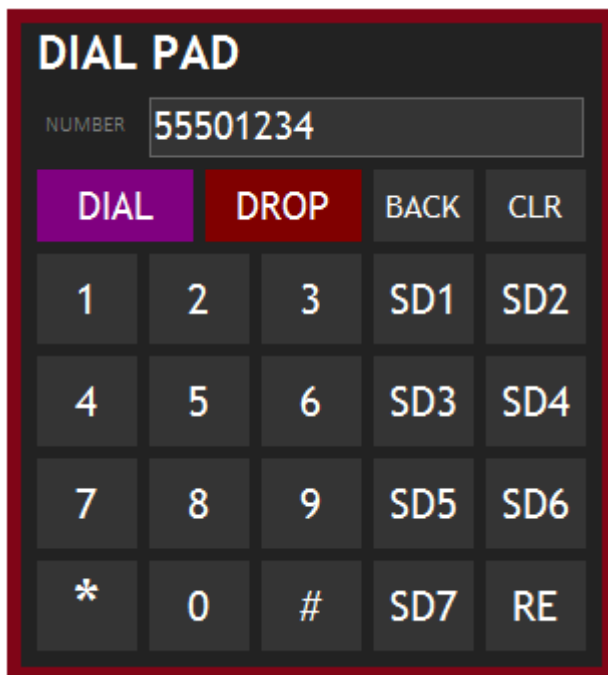
YES NO

Recent Calls

The 'Recent' calls button displays phonebook entries of the fifteen most recent incoming/outgoing calls.

Dial Pad

The Dial Pad can be used to directly dial numbers, or dial pre-defined speed-dials on the selected line.



The Dial and Drop buttons are only available if a line is currently selected.

Speed Dials (SD1 – SD7) are only available if the currently selected line has numbers assigned to them.

The Redial button is only available if the currently selected line has a previously dialled number stored.

Speed Dials

Speed Dials of the selected DHY-04/G/HD unit can be viewed and edited here.

SPEED DIALS - DHY-04HD		SAVE	ABORT
	NUMBER	NAME	
1	01933001122	Mr Smith	
2	01604321456	Mr Jones	
3	01536887867	Mrs McBride	
4	01213458643	Head Office	
5	01908261033	Police Station	
6	03456664433	County Hall	
7	04391975864	Local Politician	

To be valid, a speed-dial must have a number, but not necessarily an associated name.

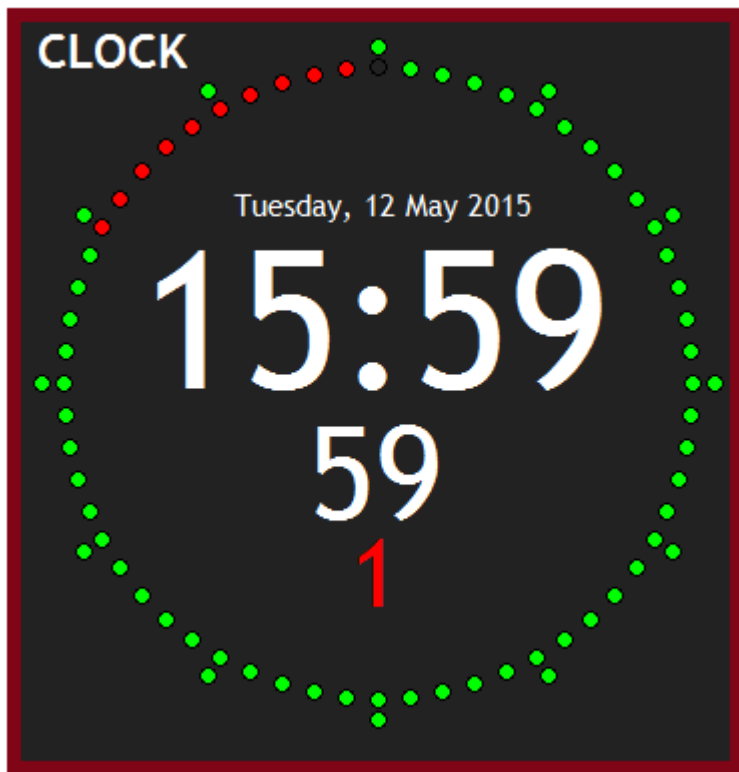
Saving Speed-Dials

Click 'Save' to upload any changes to the selected hybrid unit.

Cancelling Speed-Dials

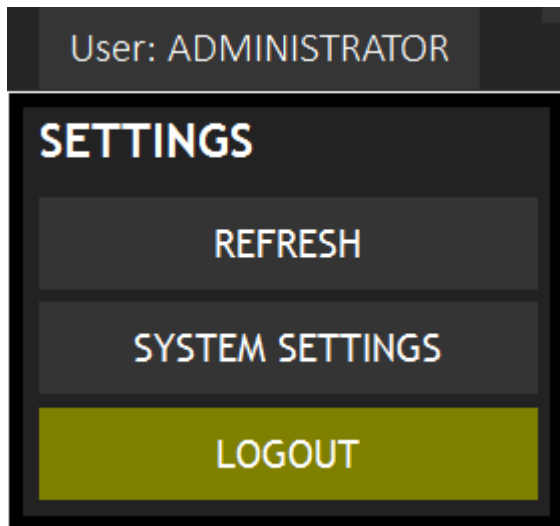
Click 'Abort' to cancel any changes and reload the speed-dials settings.

Broadcast Clock



If your PC's clock is synchronised to a reliable source, the broadcast clock will display an accurate time/date.

Settings Menu



Click on the User: name at the top-right of the screen to reveal the Settings menu.

Refresh

Refreshes the Line status indicators if they are out-of-sync.

System Settings

Shows the System Settings screen.

Logout

Logout of the selected user and return to the User menu.

System Settings

SETUP SAVE ABORT

LINE	LINE NAME	TCP/IP ADDRESS	ENABLE
1	DHY-04HD	192.168.0.171	YES
2	DHY-04 L	192.168.0.251	NO
3	DHY-04 R	192.168.0.252	NO
4	Phone #4		NO
5	Phone #5		NO
6	Phone #6		NO
7	Phone #7		NO
8	Phone #8		NO
9	Phone #9		NO
10	Phone #10		NO
11	Phone #11		NO
12	Phone #12		NO
13	Phone #13		NO
14	Phone #14		NO
15	Phone #15		NO
16	Phone #16		NO
17	Phone #17		NO
18	Phone #18		NO
19	Phone #19		NO
20	Phone #20		NO
21	Phone #21		NO
22	Phone #22		NO
23	Phone #23		NO
24	Phone #24		NO

USER	NAME	PIN	ENABLE
1	ADMINISTRATOR	****	YES
2	USER 2	****	YES
3	USER 3	****	YES
4	USER 4	****	YES
5	USER 5	****	YES

SHOW MINIMIZE BUTTON YES

Lines

Upto 24 hybrid units/lines can be defined here. Only enabled lines are displayed in the Lines screen. Each line can be named, and must have a correct TCP/IP address for successful connection.

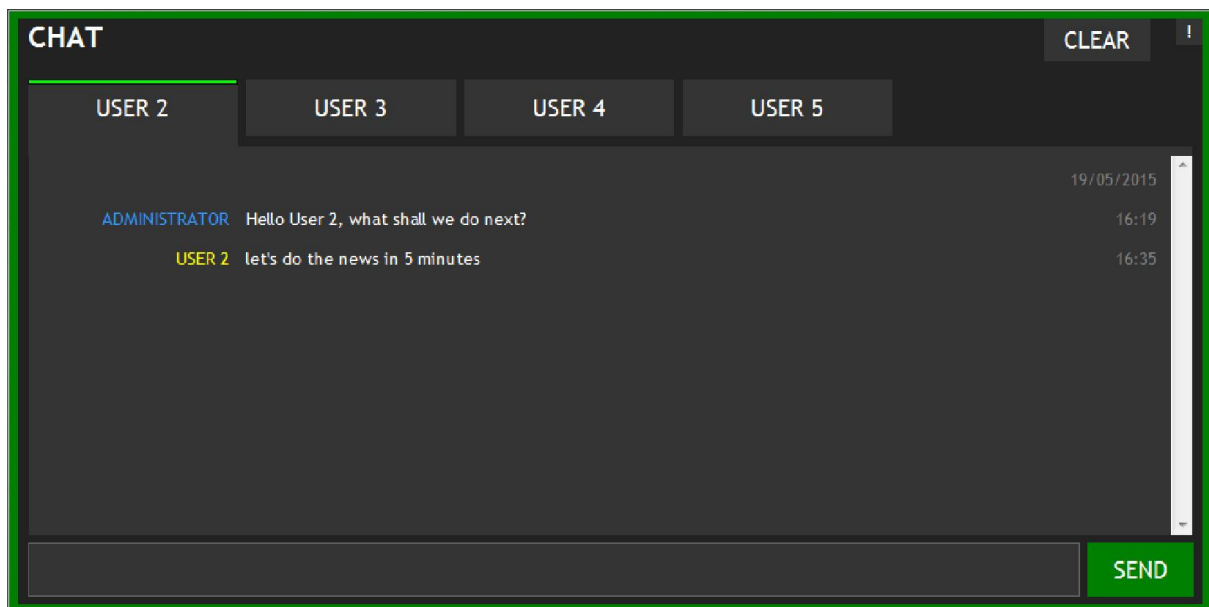
Users

The 5 users can be defined here. Only enabled users are displayed for selection in the User menu. Each user must be given a four-digit PIN. Default PINs are:

User	PIN
Administrator	1234
User 2	2222
User 3	3333
User 4	4444
User 5	5555

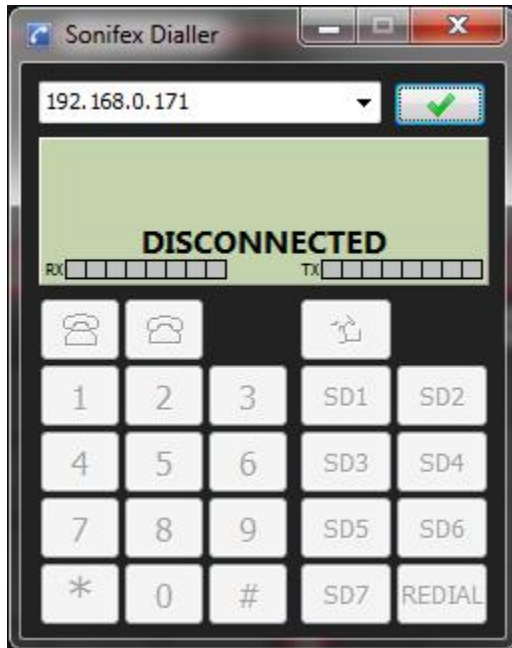
Chat

Networked users of SSS can use the in-built chat window to communicate between each other.

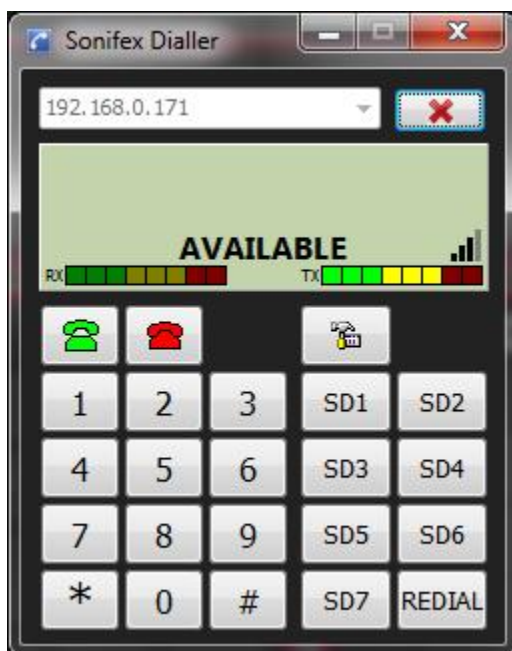


Sonifex Dialler

The Sonifex Dialler is a Windows™ 7/8 application for simple connection and control of a single DHY-04/G hybrid.



To connect to a hybrid, simply enter/select the TCP/IP address in the drop-down list at the top left of the screen, then click the connect button.



The dialler has a numeric keypad, speed-dials, last number re-dial, Rx and Tx metering, status indicator.

There is also signal strength indicator when connected to a hybrid with a GSM module.