

## FAQs

### Sonifex Redbox Frequently Asked Questions (FAQ)



This FAQ (frequently asked questions) answers some of the popular questions asked about the Redbox range. If you have any specific questions regarding the operation of Redboxes which aren't covered below, please contact your nearest distributor, or Sonifex directly.

Related Links:

[The Redbox Range](#)

[Redbox Catalogues and Handbooks](#)

### RB-DS2

#### **RB-DS2 When in EXTENDED CF (RAW) and ANALOGUE SYNC MODE the RB-DS2 locks up on boot / outputs noise.**

Due to the way RAW mode works it is important the compact flash card used meets the quoted minimum speed standard for use in the RB-DS2 (PIO mode4).

PIO Mode 4 / 16.7MBs / 120 ns

(\* set by : MODE :- EXTENDED CF (RAW))

#### **When in EXTENDED CF (FAT)\* mode only the first 2GB of a compact flash card is available, why is this?**

When in FAT mode the RB-DS2 uses the FAT 16 file system, (FAT 16 only uses 16 address lines and therefore cannot address any files greater than 2GB). For larger cards please use the EXTENDED CF (RAW) mode file system and the full capacity of the card will be available.

(\* set by : MODE :- EXTENDED CF (FAT))

#### **What is the maximum delay available from a RB-DS2?**

This is related to the settings used and size of compact flash card.

As an approximate indication a 16 bit sample width represents 4 bytes per sample and a 24 bit sample width 8 bytes per sample this is multiplied by the sample rate to give the number of bytes used per second. So to give an indication of the available delay on a 2GB card for a 16 bit sample width and 48k sample rate you would use:

$2 \times 10^9 / 48000 \times 4 = 10416.67$  seconds or 2.89 hours (2 hours 53 minutes)

When using EXTENDED CF (FAT) mode the available delay will be slightly shorter than this because some space is used by the file system table.

#### **Do I need a specific make or speed of compact flash card to use with the RB-DS2?**

No, The RB-DS2 examines a card when it is inserted and checks the maximum amount of data that can be safely transferred at a given setting. The unit has been tested and verified with Sandisk and Kingston cards in-house and as such these are the recommended cards for use with the unit. For optimum results use a 45 x or faster card

#### **Can I change the delay on the RB-DS2 whilst a delay is active?**

Yes but only provided the unit has been on for that amount of time for example if a unit is turned on at 15:30 and an hour delay is set at 16:00 this will result in half an hour of no output until the unit has been on for an hour. However if it was set to an hour at 17:00 the delay would change immediately.

#### **Is there a recommended way to connect serial and remote connections to the unit?**

Yes, In order to ensure correct operation all cables should be connected before powering up and should be made with shielded cable that is terminated to ground/ chassis at both ends.

#### **I have a problem with my RB-DS2 what should I do?**

Try upgrading to the latest version of firmware available at:

<http://www.sonifex.co.uk/technical/software/index.shtml>

If this does not work please contact our technical support team with full details of your problem at:

[support@sonifex.co.uk](mailto:support@sonifex.co.uk)

#### **Are there any recommended compact flash card for use with the RB-DS2?**

We recommend using either Sandisk or Kingston compact flash cards, various cards from each of these manufacturers have been extensively tested with the RB-DS2. Other types and manufacturers of card have not been tested and therefore we couldn't guarantee correct operation.

#### **RB-DS2 Compact Flash Compatibility Chart**

Card Tested	Capacity	Manufacturer Part Number	Result
Sandisk ultra 30 MB/s	16GB	N/A	PASS
Sandisk ultra 30 MB/s	8GB	N/A	PASS
Sandisk ultra II 15 MB/s	4GB	N/A	PASS
Sandisk Compact Flash	2.0GB	N/A	PASS
Lexar Professional 300x	16GB	508-60729 Rev B	PASS
Lexar Professional 400x	8GB	508-60729 Rev B	PASS
Kingston Elite Pro 133x	4GB	CF/4GB-S2	PASS
Kingston Elite Pro 133x	8GB	CF/8GB-S2	FAIL
Kingston Elite Pro 133x	16GB	CF/16GB-S2	PASS
Kingston Compact Flash	8GB	CF/48GB	FAIL

## RB-MM1

### RB-MM1 Output Null Adjustments (LF and Full-Band)

The 2 x null preset potentiometers are used to adjust the null between the input from the telephone fader and the main stereo input. The telephone input is made anti-phase and used to cancel out that signal in the main stereo signal. So, the nulls adjust the level of anti-phase signal required to achieve the best mix-minus null.

## RB-OA3

### Connecting the RB-OA3 to a LED Sign

In order to provide an on air indication from the RB-OA3 to an ON AIR LED sign the accept signal can be used. Unfortunately, this signal is referenced to 15v so direct interface is not possible. The two units can be used together however, by using an external relay to provide the switching of the relevant LED sign input.

The coil of the relay would then be connected between the 15v supply of the RB-OA3 control port and the accept ground. Then the normally open contact pins could be connected to the LED sign and would switch it on when that studio accepts.

## RB-PD2

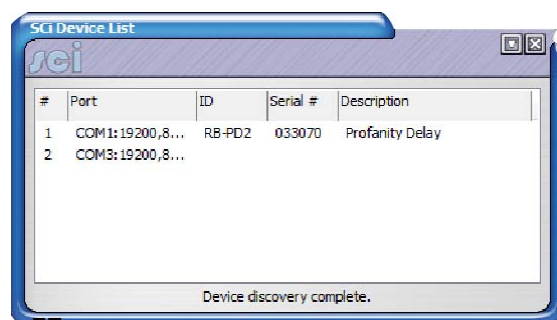
### Upgrading PD2 Firmware



Connect your unit to the comm port on your PC using a straight through pin to pin to pin RS232 cable ensure the PD2 baud rate is set to 19200.

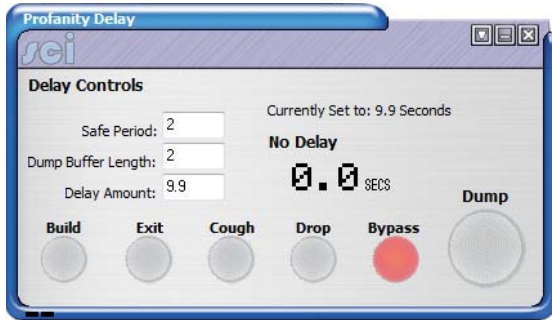
Open Sci The screen below will appear

If your unit is not already in the launcher list click the plus sign at the bottom of the launcher to discover devices.



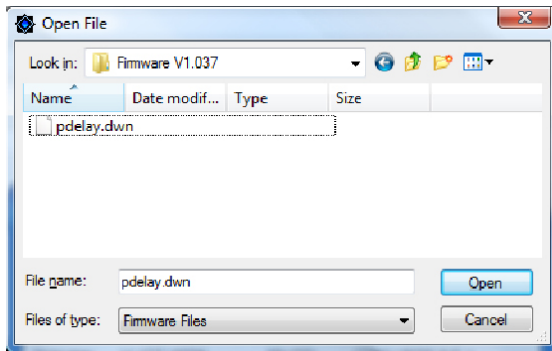


Click file and save to add your unit, then close the device discovery window and click on your device in the launcher window.

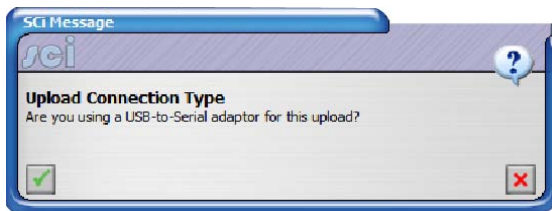


1. Click on the drop down box and select advanced upload firmware.

Browse to the directory that contains the file to upload and click open.



The following screen will appear click the tick if you are using a USB to RS232 converter and the cross if not.



The upload should then begin.

#### Are there any recommended compact flash card for use with the RB-PD2?

We recommend using either Sandisk or Kingston compact flash cards, various cards from each of these manufacturers have been extensively tested with the PD2. Other types and manufacturers of card have not been tested and therefore we couldn't guarantee correct operation.

## RB-SL2

### How do I set up the RB-SL2 limiter?

The easiest way to set up the limiter is as follows, taking one channel at a time in mono mode : First turn the limit control to maximum (fully clockwise). Using an audio oscillator, inject a 1000Hz tone at 0dB (775mV into a 600 ohm load) at the input. Monitor the output with an audio analyser and adjust the gain control to give you the required output gain/attenuation. Next inject a tone at a higher level than you need to limit to (i.e. if you want to limit at 6dB higher than your output level, inject 7dB). Then turn the limit level anti-clockwise until the output reads the desired level and the LED on the front panel flashes (red/yellow for CH1 and green/yellow for CH2). In stereo mode CH1 controls the levels for both outputs.